

---

---

---

---

---

---

---

---



---

---

---

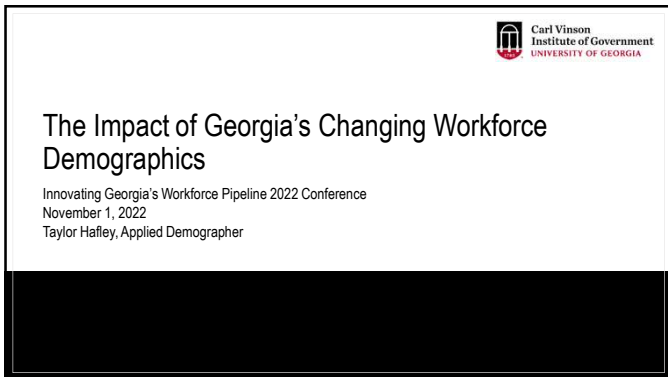
---

---

---

---

---



---

---

---

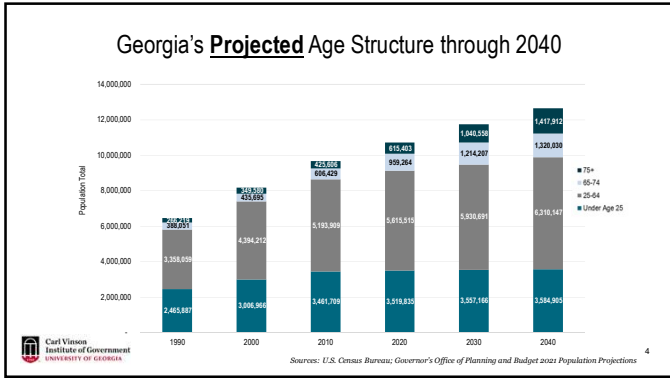
---

---

---

---

---




---

---

---

---

---

---

---

---

---

---

### Agenda

- Population Trends
- Regional Patterns
- Racial and Ethnic Diversification
- Aging Population
- Questions and Discussion

County Population, 2020 Census

- 0 to 100,000
- 100,000 to 250,000
- 250,000 to 500,000
- 500,000 to 1,000,000

---

---

---

---

---

---

---

---

---

---

### Who is in the room?

---

---

---

---

---

---

---

---

---

---

**TRIVIA**

Carl Vinson  
Institute of Government  
UNIVERSITY OF GEORGIA

7

---

---

---

---

---

---

---

---

What industry's employment grew 760% from 2007 to 2019?

Year	Employment
2007	1,867
2008	2,000
2009	2,500
2010	2,800
2011	3,000
2012	3,500
2013	4,000
2014	4,500
2015	8,380
2016	11,000
2017	15,341
2018	14,500
2019	16,058

Carl Vinson  
Institute of Government  
UNIVERSITY OF GEORGIA

8

---

---

---

---

---

---

---

---

Photo Site Selection Magazine

Carl Vinson  
Institute of Government  
UNIVERSITY OF GEORGIA

9

---

---

---

---

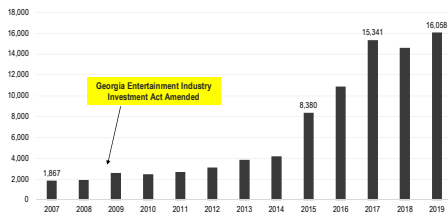
---

---

---

---

What industry's employment grew 760% from 2007 to 2019?



---

---

---

---

---

---

---

---

What is the number one agricultural product grown/produced in Georgia?

- A. Cotton
- B. Peaches
- C. Blueberries
- D. Poultry

---

---

---

---

---

---

---

---



---

---

---

---

---

---

---

---

What is the current population of Georgia?

- A. 9.8 million
- B. 10.7 million
- C. 11.6 million
- D. 12.2 million

---

---

---

---

---

---

---

---

What is the current population of Georgia?

- A. 9.8 million
- B. 10.7 million
- C. 11.6 million
- D. 12.2 million

---

---

---

---

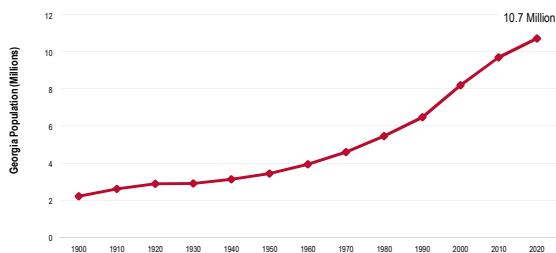
---

---

---

---

Georgia's Population, 1900-2020



---

---

---

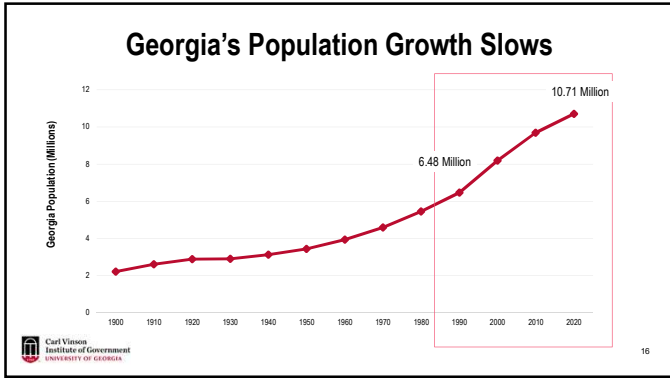
---

---

---

---

---



---

---

---

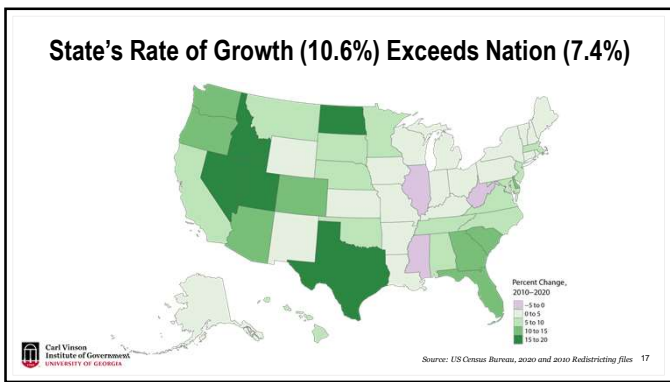
---

---

---

---

---



---

---

---

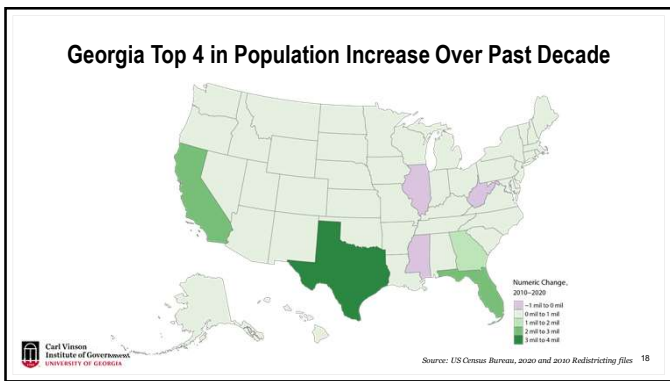
---

---

---

---

---



---

---

---

---

---

---

---

---

### Three Components of Population Change

- 1. Births
- 2. Deaths
- 3. Migration



---

---

---

---

---

---

---

---

### Three Components of Population Change

- 1. Births
- 2. Deaths
- 3. Migration



---

---

---

---

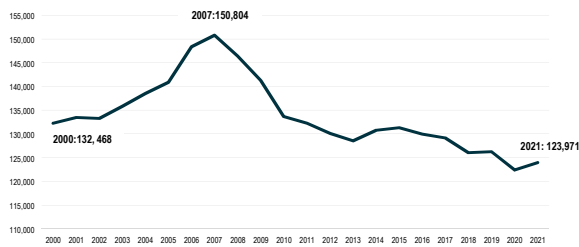
---

---

---

---

### Number of Births are Falling in Georgia



Source: Georgia Department of Public Health

---

---

---

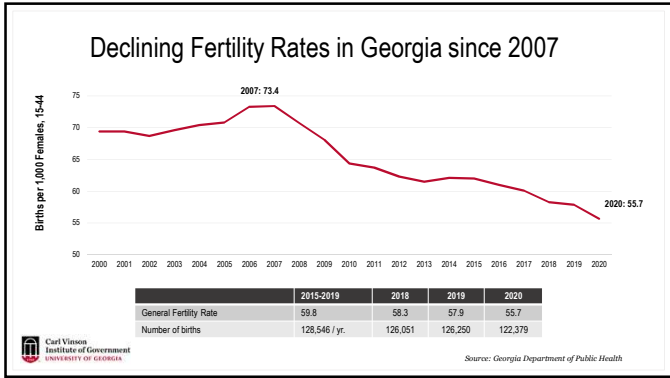
---

---

---

---

---




---

---

---

---

---

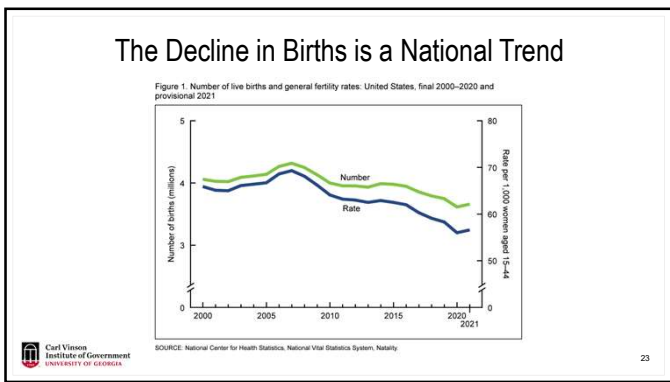
---

---

---

---

---




---

---

---

---

---

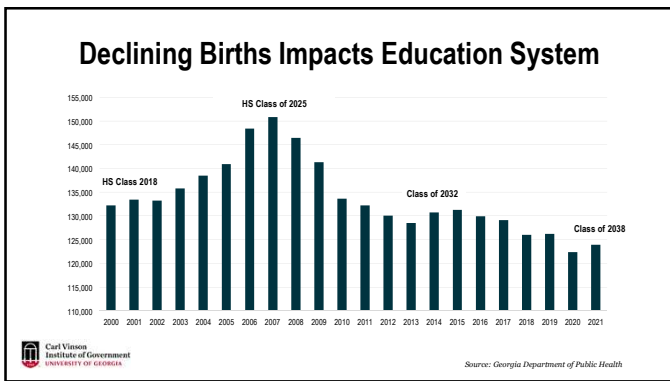
---

---

---

---

---




---

---

---

---

---

---

---

---

---

---



# Three Components of Population Change

1. Births
2. Deaths
3. Migration

---

---

---

---

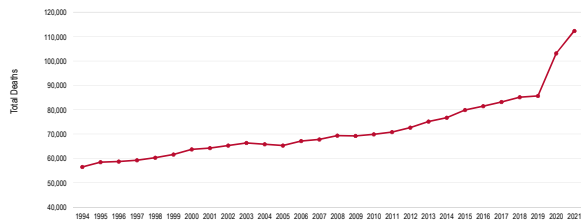
---

---

---

---

## ~26,000 More Deaths in 2021 than in 2019




---

---

---

---

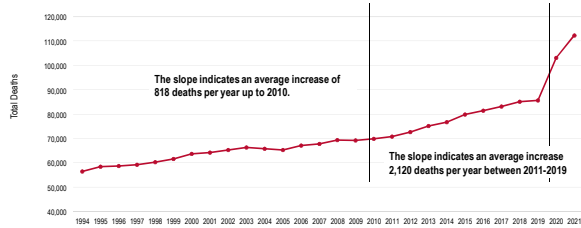
---

---

---

---

## Deaths were increasing prior to Covid-19




---

---

---

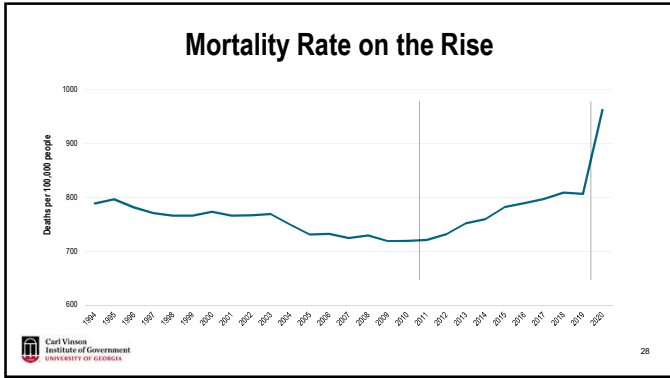
---

---

---

---

---




---

---

---

---

---

---

---

---

---

---

## Natural Change = Births - Deaths

Components of  
of Population Change

Carl Vinson Institute of Government  
UNIVERSITY OF GEORGIA

---

---

---

---

---

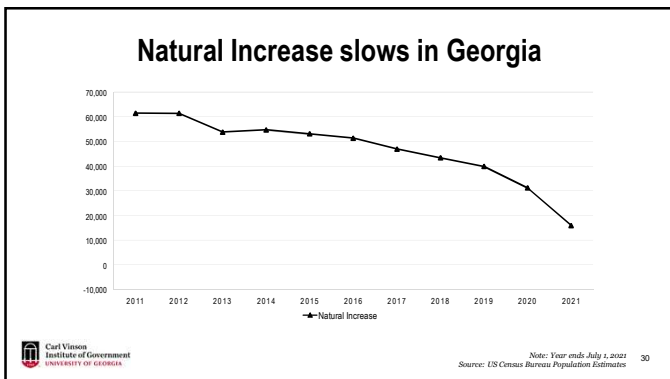
---

---

---

---

---




---

---

---

---

---

---

---

---

---

---

## Three Components of Population Change

1. Births
2. Deaths
3. Migration

---

---

---

---

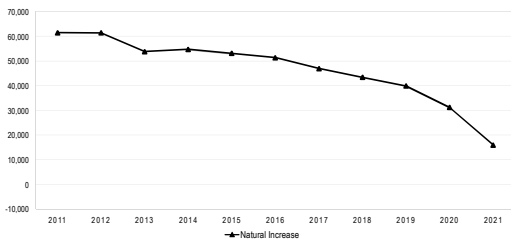
---

---

---

---

## Natural Increase slows in Georgia



---

---

---

---

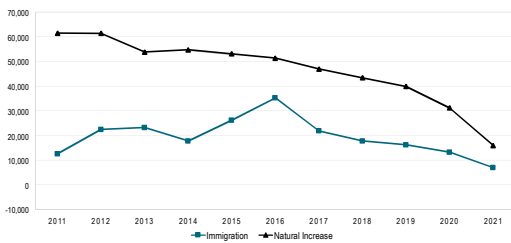
---

---

---

---

## International Migration Stable; Slows in Recent Years



---

---

---

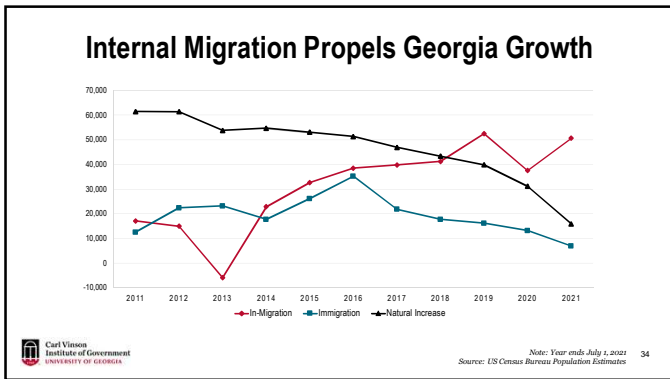
---

---

---

---

---



---

---

---

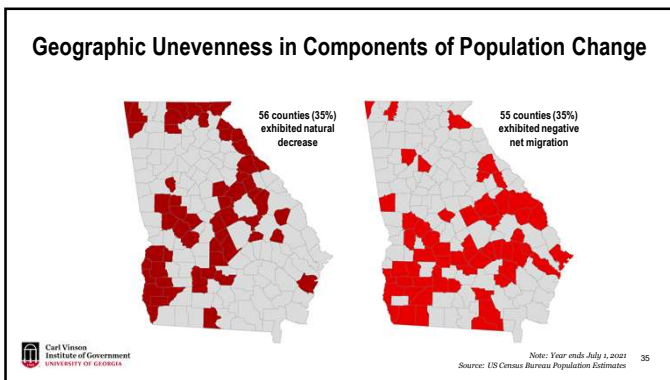
---

---

---

---

---



---

---

---

---

---

---

---

---

### Small Group Discussion

What are the implications of these demographic shifts on Georgia's workforce in your industry and communities?

Carl Vinson Institute of Government UNIVERSITY OF GEORGIA

---

---

---

---

---

---

---

---

## Regional Patterns of Workforce Population 2020 Census



37

---

---

---

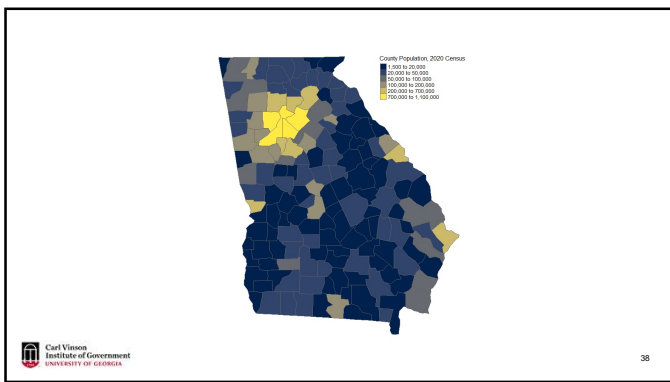
---

---

---

---

---




---

---

---

---

---

---

---

---

### Population Growth Concentrated in Population Centers

	Numeric Increase		Largest Numeric Decrease		
	Numeric Increase	#	Largest Numeric Decrease	#	
1	Gwinnett County	151,741	150	Baldwin County	-1,921
2	Fulton County	146,129	151	Pulaski County	-2,155
3	Cobb County	78,071	152	Macon County	-2,658
4	Forsyth County	75,772	153	Talbot County	-2,678
5	DeKalb County	72,489	154	Sumter County	-3,203
6	Cherokee County	52,274	155	Crisp County	-3,311
7	Clayton County	38,171	156	McIntosh County	-3,358
8	Henry County	36,790	157	Doyle County	-3,710
9	Columbia County	31,957	158	Telfair County	-4,023
10	Chatham County	30,163	159	Douglas County	-8,775

39

---

---

---

---

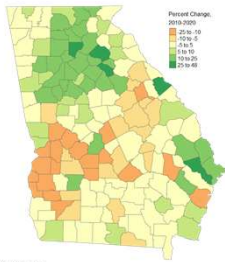
---

---

---

---

### Suburban and Exurban Population Growth



Fastest Growing		Largest Decrease	
	%		%
1	Bryan County 48.0	150	Weber County -16.1
2	Forsyth County 43.2	151	Talbot County -16.5
3	Oconee County 27.4	152	Baker County -16.7
4	Columbia County 25.8	153	Calhoun County -16.7
5	Jackson County 25.5	154	Randolph County -16.8
6	Cherokee County 24.4	155	Pulaski County -17.8
7	Effingham County 24.0	156	Macon County -18.0
8	Barrow County 20.4	157	McIntosh County -23.4
9	Dawson County 20.0	158	Telfair County -24.4
10	Towns County 19.3	159	Dooly County -24.9

Carl Vinson  
Institute of Government  
UNIVERSITY OF GEORGIA

Source: US Census Bureau, 2010 and 2020 Redistricting files 40

---

---

---

---

---

---

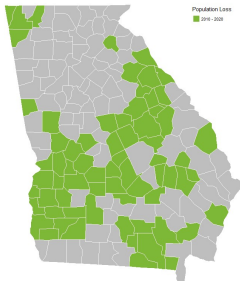
---

---

---

---

68 counties lost  
population between  
2010 and 2020



Carl Vinson  
Institute of Government  
UNIVERSITY OF GEORGIA

Source: US Census Bureau, 2010 and 2020 Redistricting files 41

---

---

---

---

---

---

---

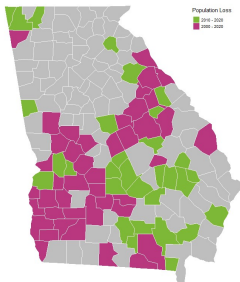
---

---

---

68 counties lost  
population between  
2010 and 2020

43 counties have  
fewer people in  
2020 than in 2000



Carl Vinson  
Institute of Government  
UNIVERSITY OF GEORGIA

Source: US Census Bureau, 2010 and 2020 Redistricting files 42

---

---

---

---

---

---

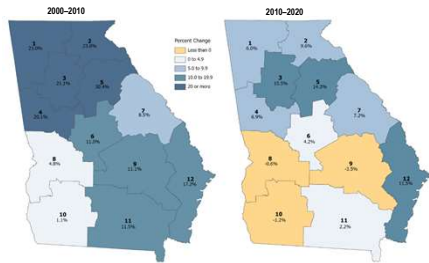
---

---

---

---

### Population Change by Regional Commission



- Atlanta Regional Commission accounted for 1/2 of population growth from 2000–10 and 2/3 from 2010–20
- Population Declines in Three Regions over past decade

Carl Vinson Institute of Government UNIVERSITY OF GEORGIA

Source: US Census Bureau 43

---

---

---

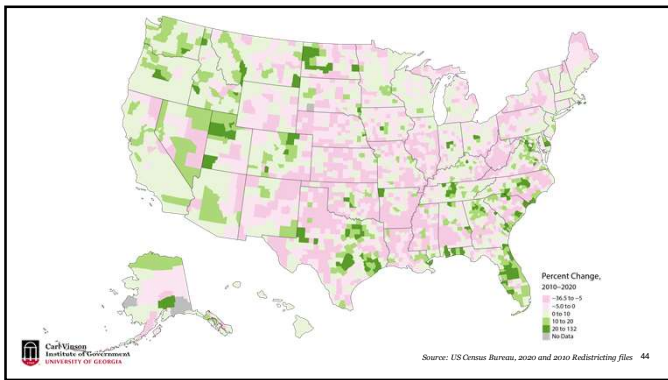
---

---

---

---

---



Carl Vinson Institute of Government UNIVERSITY OF GEORGIA

Source: US Census Bureau, 2010 and 2020 Redistricting files 44

---

---

---

---

---

---

---

---

### Urban and Rural Populations

Carl Vinson Institute of Government UNIVERSITY OF GEORGIA

45

---

---

---

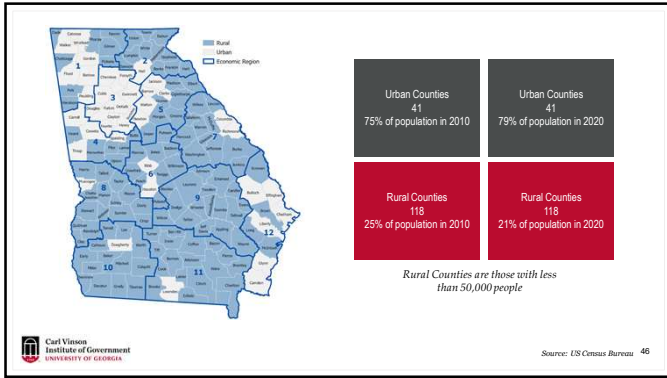
---

---

---

---

---




---

---

---

---

---

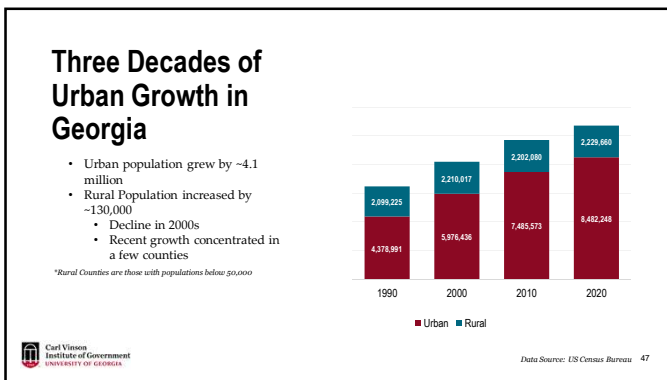
---

---

---

---

---




---

---

---

---

---

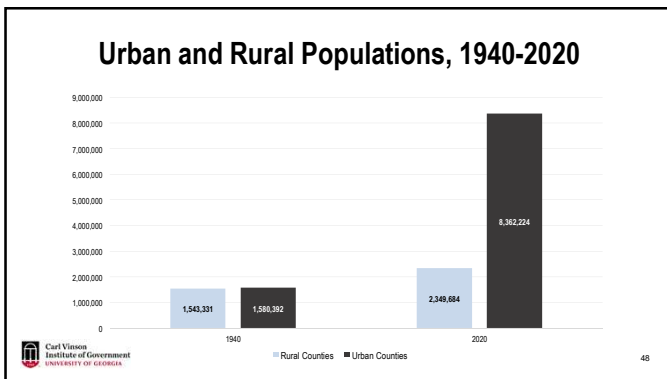
---

---

---

---

---




---

---

---

---

---

---

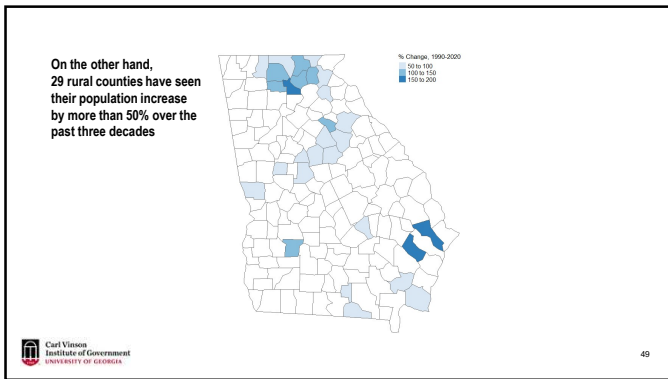
---

---

---

---





---

---

---

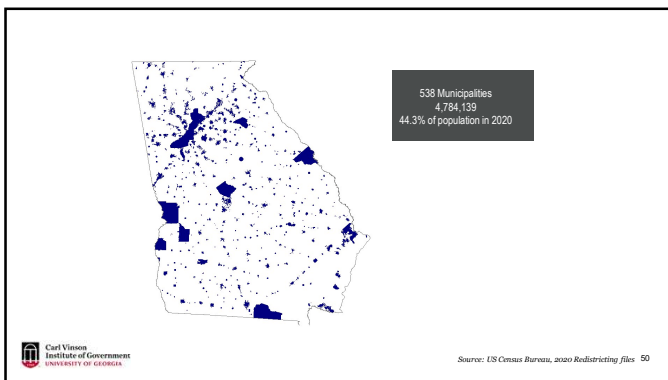
---

---

---

---

---



---

---

---

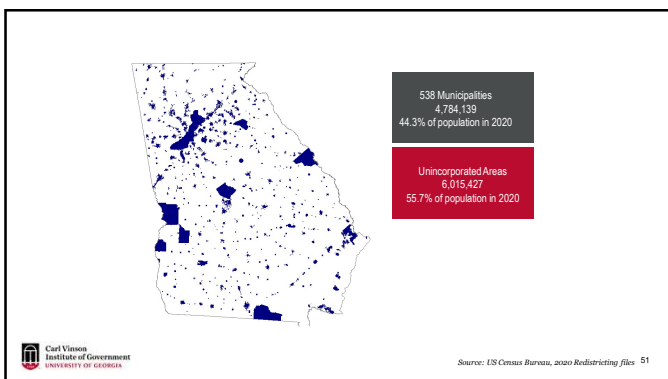
---

---

---

---

---



---

---

---

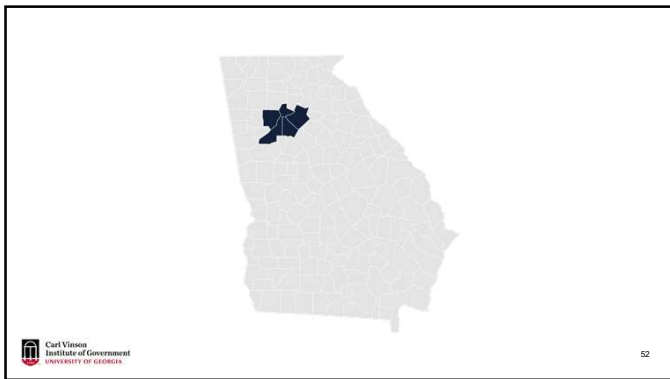
---

---

---

---

---



---

---

---

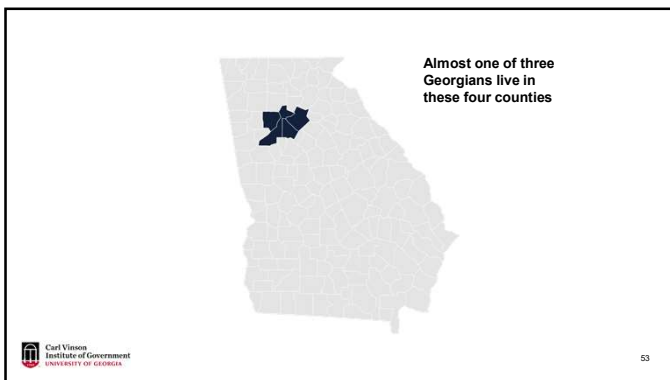
---

---

---

---

---



---

---

---

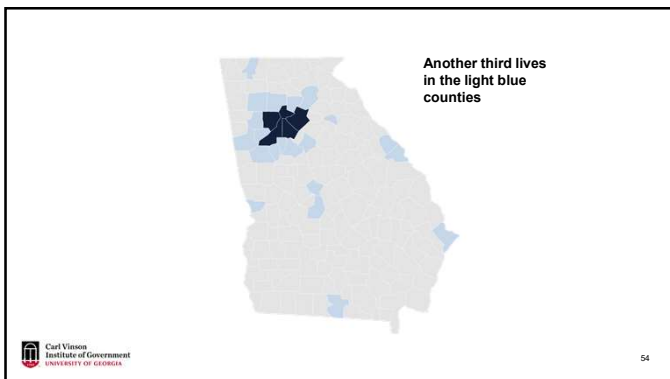
---

---

---

---

---



---

---

---

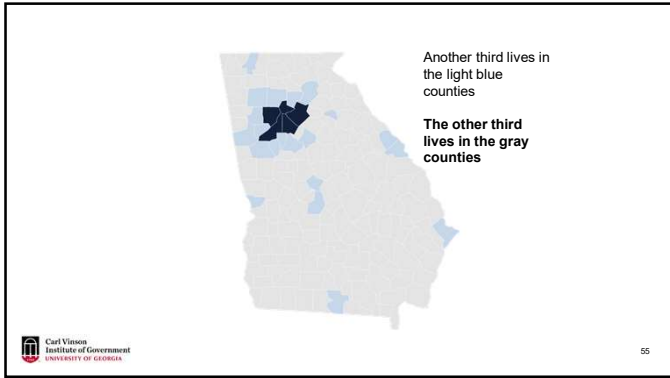
---

---

---

---

---



---

---

---

---

---

---

---

---

# RACIALLY AND ETHNICALLY DIVERSE WORKFORCE

Carl Vinson Institute of Government  
UNIVERSITY OF GEORGIA

56

---

---

---

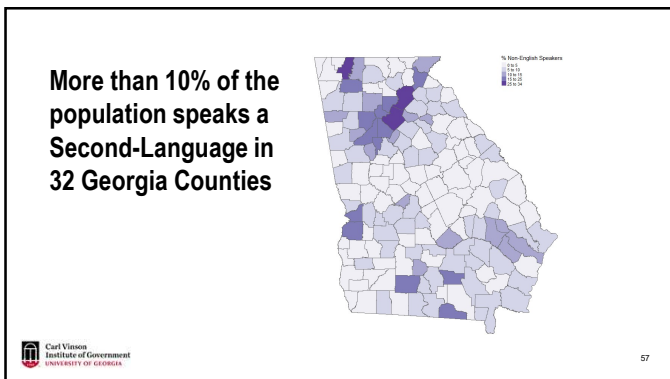
---

---

---

---

---



---

---

---

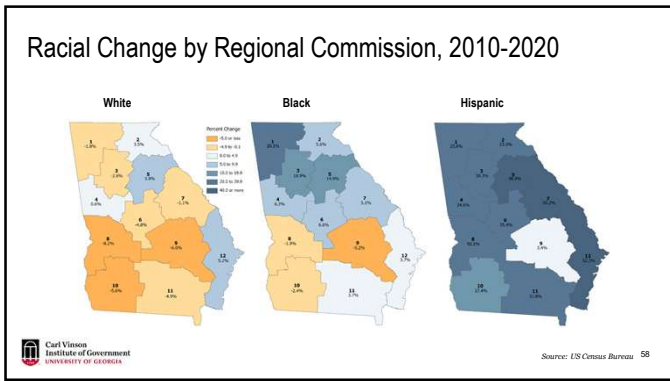
---

---

---

---

---




---

---

---

---

---

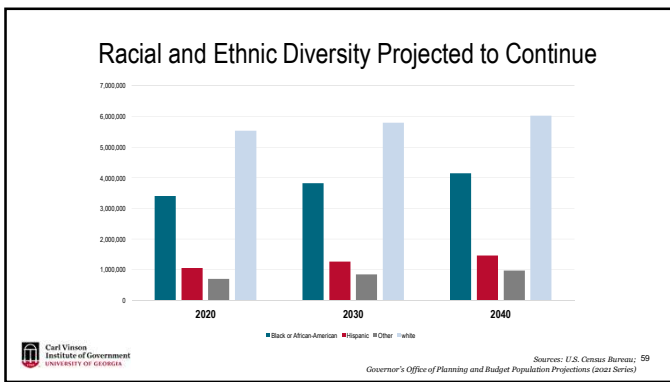
---

---

---

---

---




---

---

---

---

---

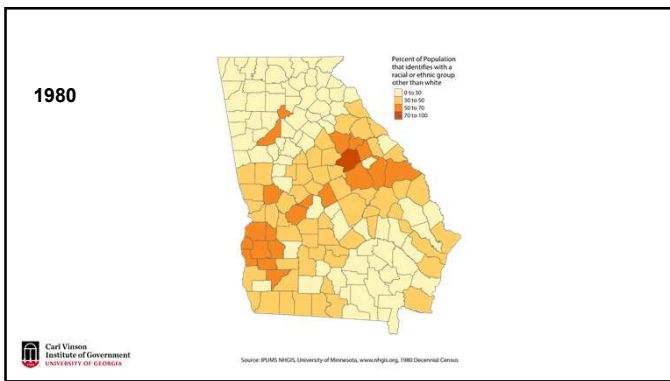
---

---

---

---

---




---

---

---

---

---

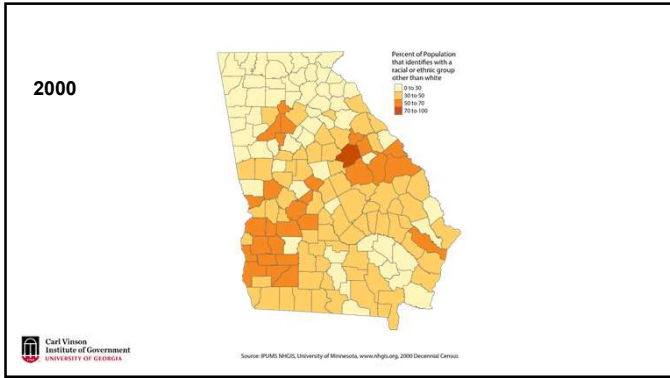
---

---

---

---

---



---

---

---

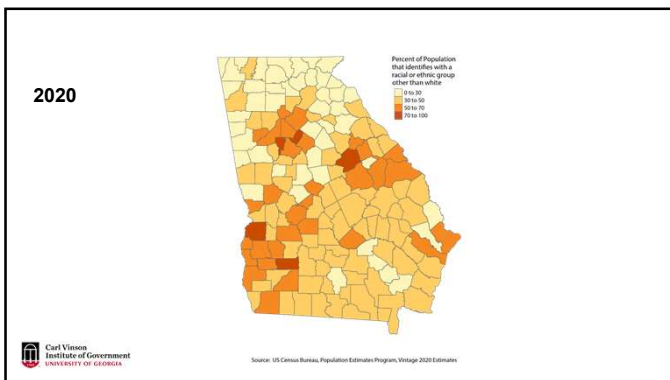
---

---

---

---

---



---

---

---

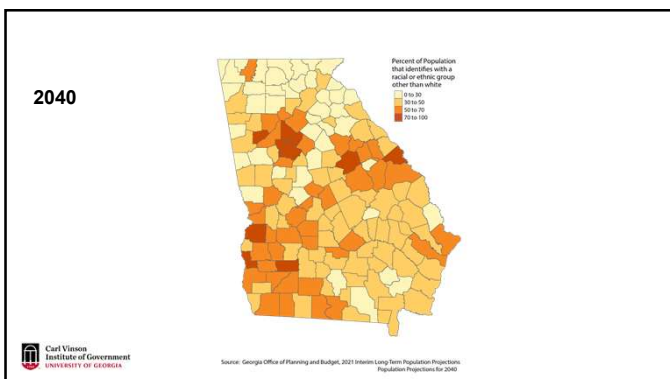
---

---

---

---

---



---

---

---

---

---

---

---

---

# GEORGIA'S AGING POPULATION



64

---

---

---

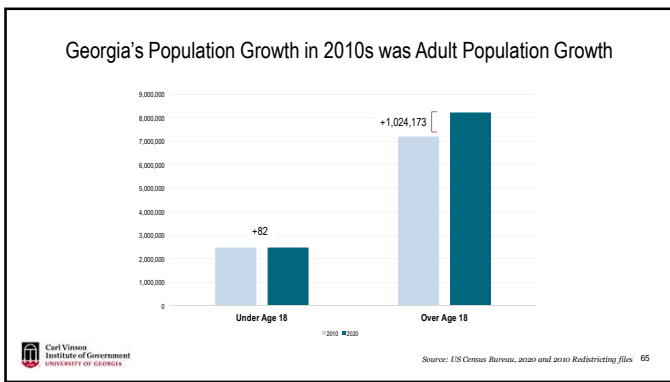
---

---

---

---

---




---

---

---

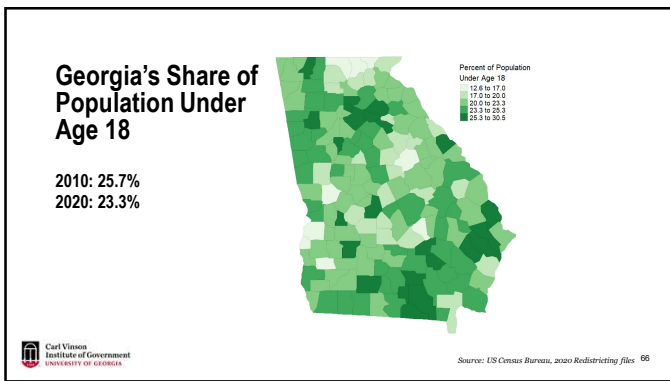
---

---

---

---

---




---

---

---

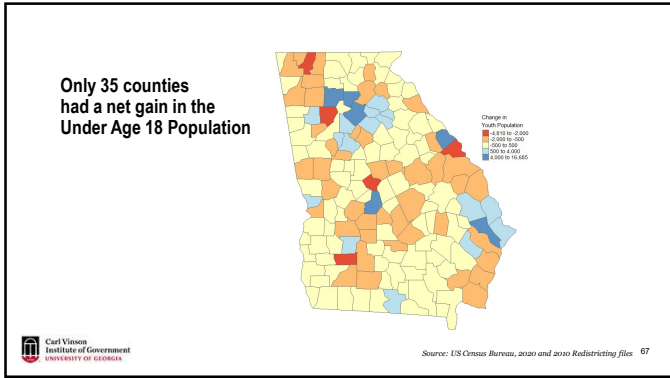
---

---

---

---

---



---

---

---

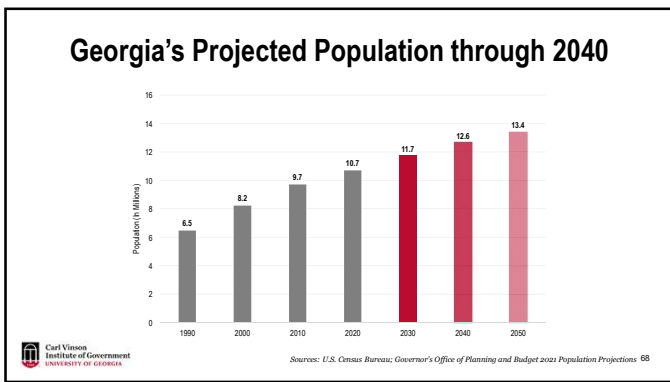
---

---

---

---

---



---

---

---

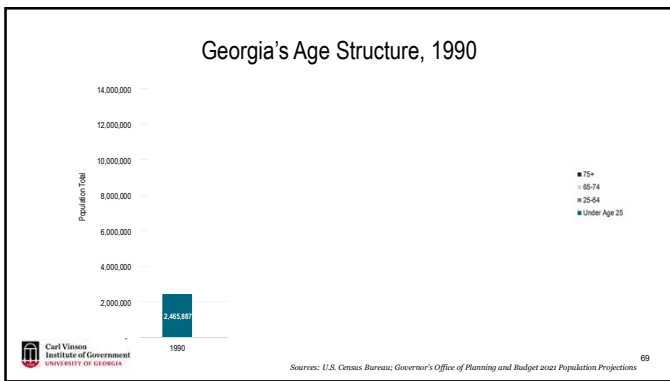
---

---

---

---

---



---

---

---

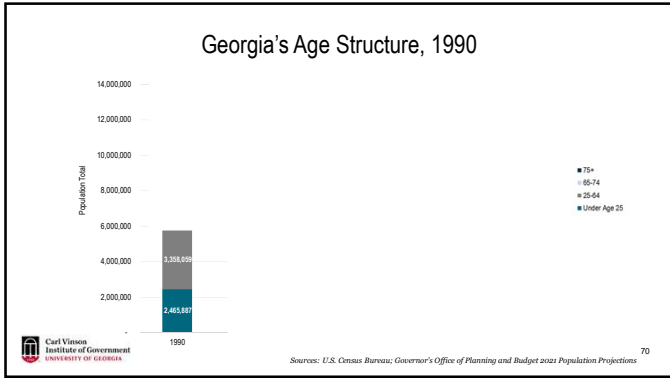
---

---

---

---

---




---

---

---

---

---

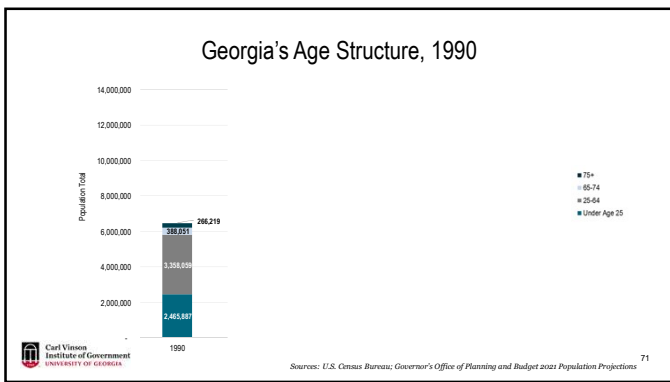
---

---

---

---

---




---

---

---

---

---

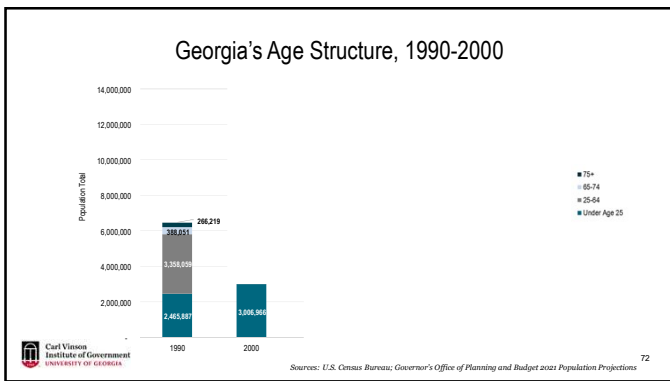
---

---

---

---

---




---

---

---

---

---

---

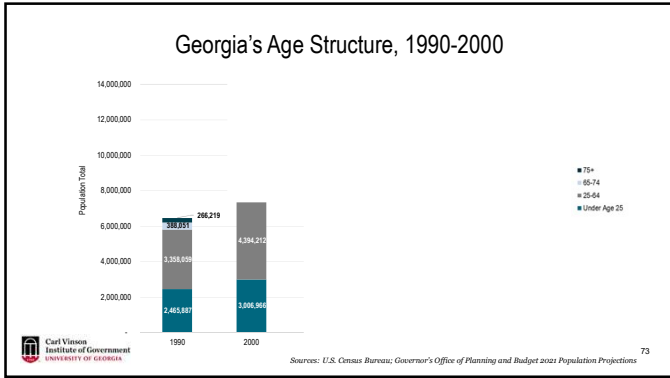
---

---

---

---






---

---

---

---

---

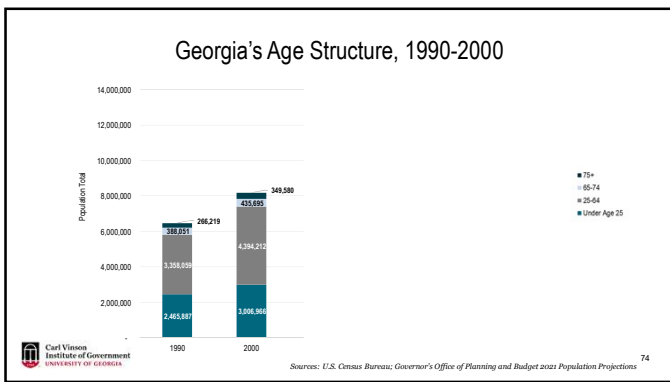
---

---

---

---

---




---

---

---

---

---

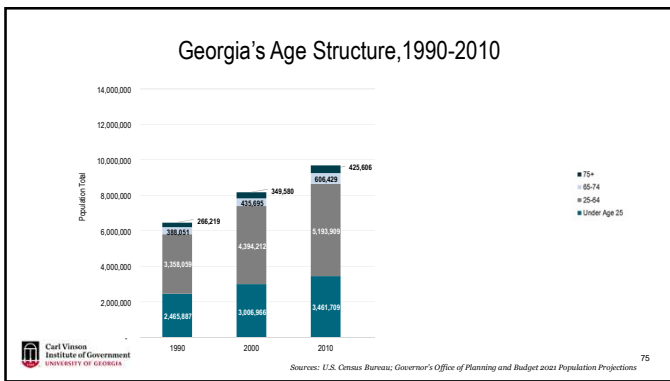
---

---

---

---

---




---

---

---

---

---

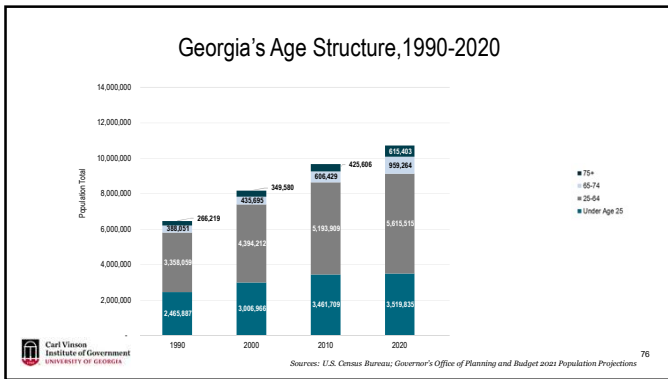
---

---

---

---

---




---

---

---

---

---

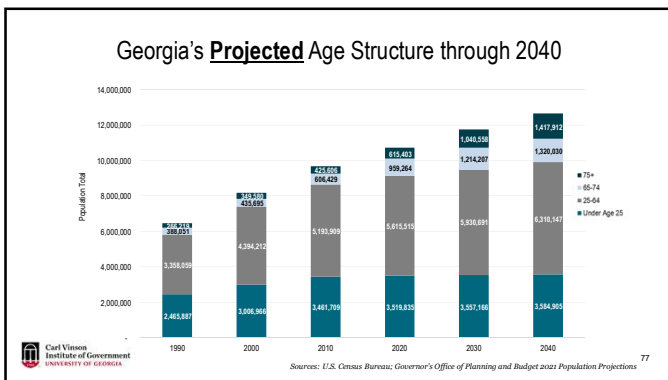
---

---

---

---

---




---

---

---

---

---

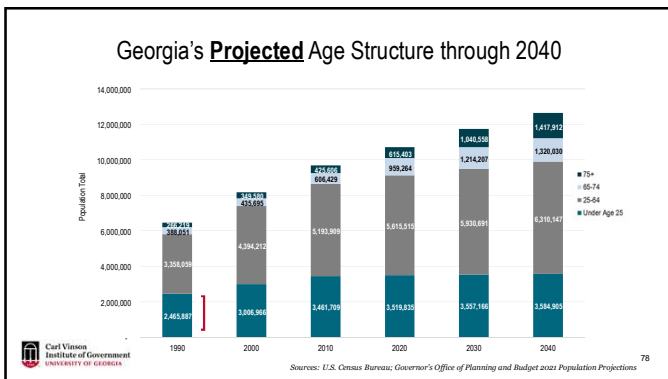
---

---

---

---

---




---

---

---

---

---

---

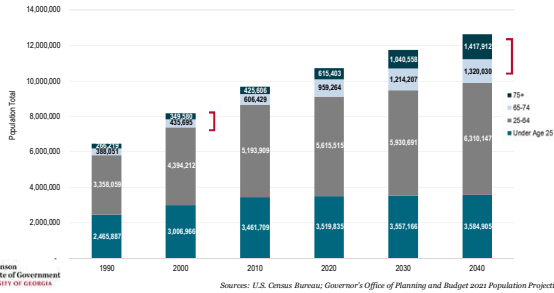
---

---

---

---

### Georgia's Population over Age 65 Grows Faster than Rest of State




---

---

---

---

---

---

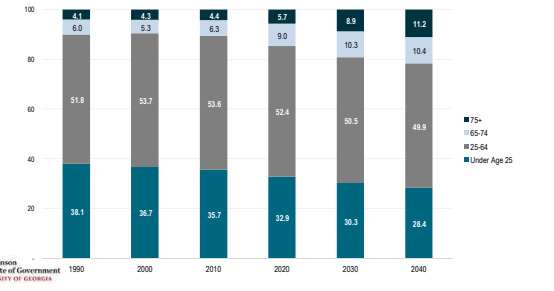
---

---

---

---

### Georgia's Changing Age Structure




---

---

---

---

---

---

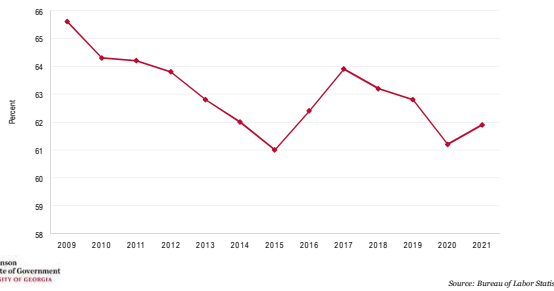
---

---

---

---

### Labor Force Participation Rate




---

---

---

---

---

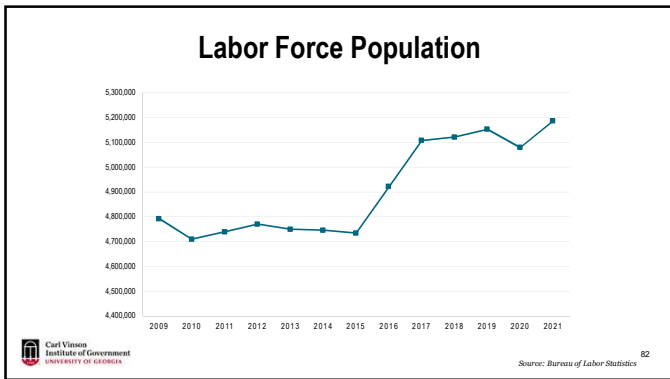
---

---

---

---

---




---

---

---

---

---

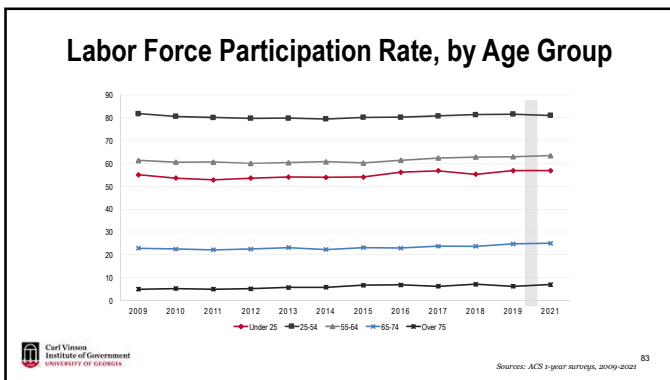
---

---

---

---

---




---

---

---

---

---

---

---

---

---

---

**3,830,264 households in Georgia**

1,377,105 are Renter Households (36%)

2,453,159 are Owner Occupied Households (64%)

Carl Vinson Institute of Government  
UNIVERSITY OF GEORGIA

Source: US Census Bureau, 2016-20 ACS data 84

---

---

---

---

---

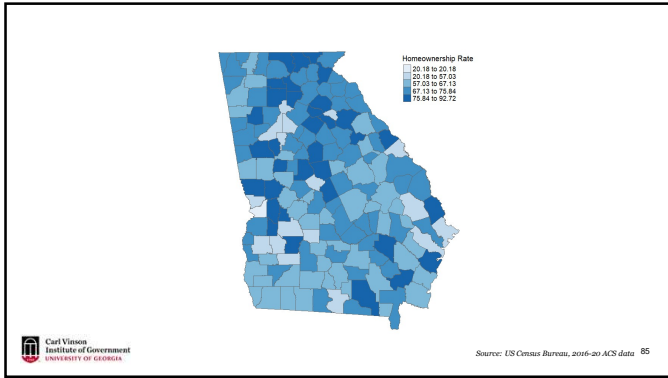
---

---

---

---

---



---

---

---

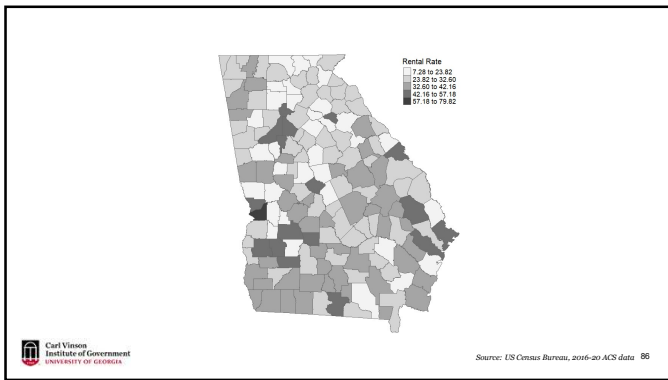
---

---

---

---

---



---

---

---

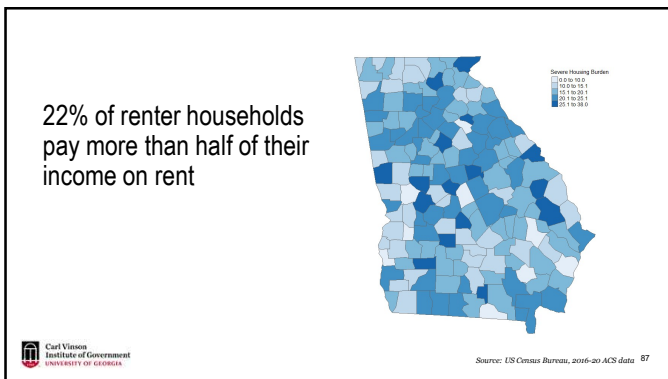
---

---

---

---

---



---

---

---

---

---

---

---

---

### Changing Demographics impact on state's workforce

- Georgia is among fastest and largest growing states in the country
- Geographically Uneven Population Trends
  - Growth Concentrated in Metropolitan Atlanta, Mountains, and Coastal Areas
  - Long-Term population loss in many Georgia counties
- Aging Population
  - Under Age 18 Population growth stagnates
  - Over Age 65 Population is growing faster than rest of state

---

---

---

---

---

---

---

---

### QUESTIONS AND REACTIONS

Taylor Hatley  
Applied Demographer  
taylor.hatley@uga.edu

---

---

---

---

---

---

---

---

---

---

---

---

---

---

---

---



Since 1927, the Carl Vinson Institute of Government has been an integral part of the University of Georgia. A public service and outreach unit of the university, the Institute of Government is the largest and most comprehensive university based organization serving governments in the United States through research services, customized assistance, training and development, and the application of technology.

---

---

---

---

---

---

---

---

### Connect With Us!



facebook.com  
/VinsonInstitute



Carl Vinson  
Institute of Government



@CVIOG\_UGA



www.cviog.uga.edu

---

---

---

---

---

---

---

---