

GeorgiaData.org

- Visualized data for 25 topics
- Interactive data guide
- Local Govt Finance
- County Guide Data Tables
- Local Govt Finance
- Links to partner resources

4

Topics

Welcome to GeorgiaData.org's interactive data project. The data on this website is open, accurate, timely and often made up of government records that are freely available. You can use the data for the topics that interest you or the regulations in order to see what is going on in your area. The data is available for use in a variety of ways. For example, you can use the data to create reports, maps, charts and graphs. You can also use the data to create reports, maps, charts and graphs. You can also use the data to create reports, maps, charts and graphs.

<p>COVID-19 Economic Data</p> <ul style="list-style-type: none"> State Tax Distributions by Jurisdiction State Tax Distributions Monthly Snapshot State Tax Distributions Over Time UJ County by Industry UJ County Monthly Snapshot UJ County Over Time <p>Agriculture</p> <ul style="list-style-type: none"> Farm State Income <p>Courts and Crime</p> <ul style="list-style-type: none"> Crime Reported State Prison Incarceration Prison <p>Economics</p> <ul style="list-style-type: none"> Median Household Income Personal Income Per Capita Poverty Rate 	<p>Education</p> <ul style="list-style-type: none"> Enrollment Attendance K-12 Enrollment <p>Health</p> <ul style="list-style-type: none"> Patient Discharge <p>Labor</p> <ul style="list-style-type: none"> County Business Patterns Labor Force Participation Occupation Population Unemployment Rate <p>Population</p> <ul style="list-style-type: none"> Population <p>Public Assistance</p> <ul style="list-style-type: none"> SNAP TANF <p>Vital Statistics</p> <ul style="list-style-type: none"> Births Deaths
---	--

5

broadband.georgia.gov

2022 Georgia Broadband Availability Map

6

ctaedelivers.org

About GaDOE CTAE

Cluster and CTSO data

Simple labor market data for CLNA and alignment

<https://gacareerpipeline.gadoe.org/>



Save The Date

Want to learn how to utilize labor market data in workforce and economic development? Join us for a 2-day training course March 1-2, 2023.

Warner Robins, GA

Registration will open in January. Scan this QR code and fill out the form to express your interest in the course.



8

GA AWARDS

Georgia's Academic and Workforce Analysis and Research Data System

Georgia's Academic and Workforce Analysis and Research Data System

David Evans
Governor's Office of Student Achievement

November 2, 2022



Discussion Points

- Overview of GA•AWARDS
- Benefits of data
- Demonstration of GA•AWARDS' dashboards
- Questions

November 2, 2022



10

What is GA•AWARDS?

- GA•AWARDS is Georgia's P-20W longitudinal data system that links individual level data from the following entities:
 - All seven of the former Alliance of Education Agency Heads member agencies

Department of Early Care and Learning	University System of Georgia
Georgia Department of Education	Technical College System of Georgia
Governor's Office of Student Achievement	Georgia Professional Standards Commission
Georgia Student Finance Commission	
 - State Charter Schools Commission, Department of Labor (DOL), Georgia Independent Colleges Association (GICA), and Georgia Military College (Prep School and Post Secondary)
- The system also includes data from the National Student Clearinghouse (nationwide postsecondary enrollment), College Board, and ACT.
- GA•AWARDS does not replace or duplicate each agency's operational data warehouse. Instead, it broadens the data available for research and reporting for each organization.

November 2, 2022



11

Overview of Data Available

- The system currently holds fifteen years of data, 2007-2021, and we will begin processing 2022 data in the coming weeks.
- Pre-K participation and number of months attended
 - K-12 and postsecondary student characteristics
 - Demographics and classifications
 - Course-taking (enrollment, course information, grades)
 - HOPE eligibility and award
 - Diplomas, certifications, degrees, pathway completions (from DOE), and GED completions
 - Applicable state assessments (CRCT, EOCT, GHSWT, GAA, GAA 2.0, EOC, and GA Milestones)
 - Applicable national assessments (SAT, ACT, AP)
 - K-12 educators
 - Demographics
 - Credentials and assessments
 - Length of service
 - Unemployment data (industry type, quarterly wages)

November 2, 2022



12

Research and Data Usage

Examples of GA•AWARDS current uses include:

- GOSA Annual Report Card (K-12 and postsecondary)
- GaDOE High School Feedback Reports (postsecondary enrollment patterns by high school that are available to districts)
- Required reporting to the U.S. Department of Education
- Ad hoc research and reporting
- Public-facing dashboards
- Research studies



Benefits of Data

- Business recruitment
- Economic development planning
- Community-level Indicators
 - Graduation rates
 - Drop-out rates
 - High school graduate postsecondary enrollment
 - Postsecondary degree attainment
 - On- or above-grade reading levels
 - Career pathway completers entering workforce



Benefits of Data (continued)

- Greater insight into areas of need
 - Percentage of students receiving social services
 - Percentage of students with high absenteeism
 - Specific discipline data (types of incidents and consequences)
 - Percentage of at-risk pre-k students
- Community evaluation
Ability to benchmark, monitor progress (year-over-year), and view comparisons including other surrounding schools and school systems with similar characteristics



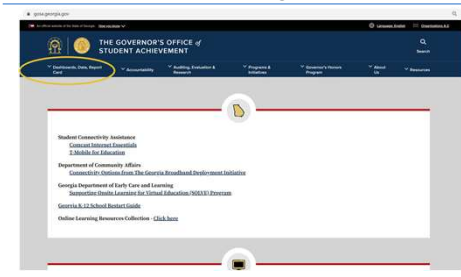
Demonstration of Dashboards

GOSA uses GA•AWARDS and other education data to produce dashboards that provide stakeholders with concise, easy-to-understand information about Georgia students' education. These dashboards include:

- [High School Graduate Outcomes](#): Provides information on student progress after high school graduation;
- [Georgia Higher Learning and Earnings](#): Displays earnings information for Georgia technical college and college/university graduates who work in Georgia after earning their degrees;
- [K12 Discipline Dashboard](#): Summarizes discipline data at the school- and district-levels for all public schools in Georgia, including suspension rates and numbers of disciplinary incidents and actions;
- [Georgia School Grades Reports](#): Provides concise school performance reports using an A-F rating system for all Georgia public elementary, middle, and high schools; and
- [Schools Like Mine](#): Allows parents, educators, and community members to find schools with similar student population characteristics for comparison to their local schools.

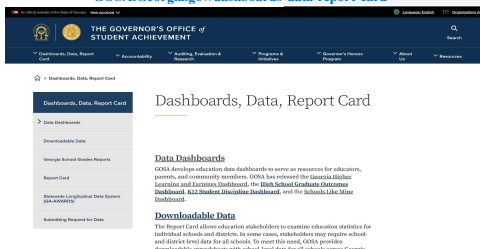


Dashboard Navigation



Dashboard Navigation

GOSA.Georgia.gov/dashboards-data-report-card



GA•AWARDS

Questions?

November 2, 2022   19

GA•AWARDS Governance

Governance Structure

- All participating organizations signed a Data Sharing Agreement that governs participation. It was last amended in July of 2019.

DATA GOVERNANCE COMMITTEE
(ALLIANCE OF EDUCATION AGENCY HEADS)



Data Management Committee
(Leadership from Participating Agencies)

GA•AWARDS Director
Justin Lundberg - GPCSA

DECAL	DOE	SCSC	TCSG	USG	GICA	GSFC	GOSA	PSC	DOJ
Jim Keith	Keith Osborne	Lauren Hinkson	Steven Ferguson	Jonathan Parrot	Anna Cablin	Mark Perez	Jackie Lundberg	Chuck McCampbell	Jeff May

GA•AWARDS Plavets =

Executive Research Executive Advanced Research Programs (Advanced Analytics)	Research Group Office of GA•AWARDS (Senior DevOps)	Data Leads (Data Owners)	Data Forward Change Data Connections
--	---	------------------------------------	---


November 2, 2022   20

Data Tools for Workforce Development


Marion Phillips
Research Manager
Community & Economic Development




Who We Are




Jennifer Zeller >
Strategic Solutions Manager




Marion Phillips >
Research Manager



Mike Mainzer >
Data Scientist



Shani Johnson >
Research Analyst



Chelsea Tucker >
Customer Relationship Management Administrator

Lightcast

Subscription-based workforce analytics tool

Industry & Occupation Analysis

- Current job estimates
- Job Projections (up to 10 years)
- Wages (10%, 25%, Average, Median, 75%, 90%)
- Typical Entry Level Education
- Openings
- Demographics

Education Data

- Completions by school and program for customizable geography
- Enrollment by school
- Historical data back to 2003
- Demographics, Tuition, Fees

Job Postings

- Filter by industry, occupation, job title, company, or skill
- Customizable geography
- Flexible timeframe

Other Helpful Tools



BusinessWise
Trustworthy Local Connections


Business Lists

- Major Employers in Area
- Employment at Location
- Contacts



Demographics

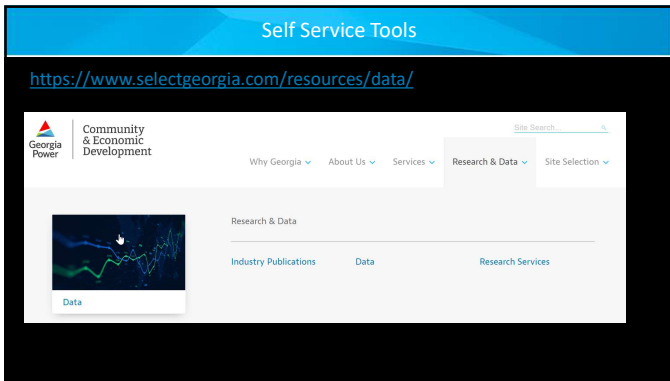
- Current Population
- Population Projections
- Median Age
- Educational Attainment

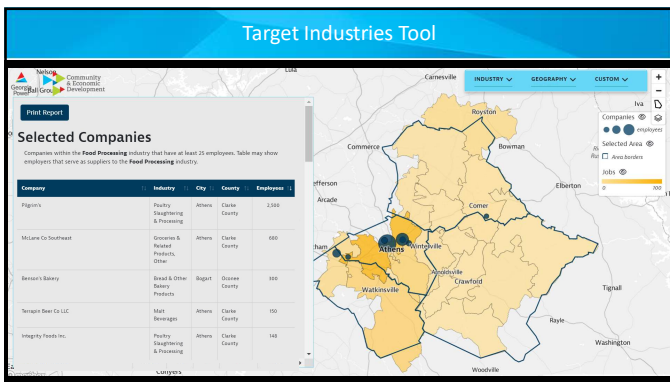


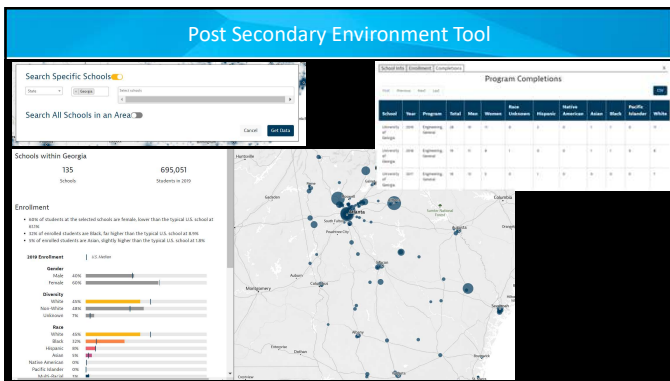
Census OnTheMap

Commute/Labor Shed

- Where Workers Live
- Where Residents Work
- <https://onthemap.ces.census.gov/>








Thank you!

Contact your local GPC Community Development Manager for more information.

<https://www.selectgeorgia.com/about-us/our-team/community-development/>



24
